



## AD-78

MAXIMUM CAPACITY (DRY WEIGHT)		75 lb	<b>34.02 kg</b>	
TUMBLER DIAMETER		44-1/2"	<b>113.03 cm</b>	
TUMBLER DEPTH		24-7/8"	<b>63.18 cm</b>	
TUMBLER VOLUME		22.40 cu ft	<b>634.30 L</b>	
TUMBLER/DRIVE MOTOR		1 hp*	<b>0.75 kW</b>	
BLOWER/FAN MOTOR		1/2 hp	<b>0.37 kW</b>	
DOOR OPENING (DIAMETER)		31-3/8"	<b>79.69 cm</b>	
DOOR SILL HEIGHT		31"	<b>78.74 cm</b>	
WATER CONNECTION		3/4"-11.5 NH (North America)		
		3/4" B.S.P.T. (Outside North America)		
DRYERS PER 20'/40' CONTAINER		10 / 20		
DRYERS PER 48'/53' TRUCK		25 / 27		
<b>Gas</b>	VOLTAGE AVAILABLE		120-575v 1,3ø 2,3,4w 50/60 Hz	
	APPROXIMATE NET WEIGHT		888 lb <b>402.79 kg</b>	
	APPROXIMATE SHIPPING WEIGHT		938 lb <b>425.47 kg</b>	
	AIRFLOW	60 Hz	1,200 cfm	<b>33.98 cmm</b>
		50 Hz	1,000 cfm	<b>28.31 cmm</b>
	HEAT INPUT		204,000 Btu/hr	<b>51,407 kcal/hr</b>
	EXHAUST CONNECTION (DIAMETER)		10"	<b>25.40 cm</b>
	COMPRESSED AIR CONNECTION		N / A	
	COMPRESSED AIR VOLUME		N / A	
	INLET PIPE CONNECTION		3/4" F.N.P.T.	
3/4" B.S.P.T. (CE and Australia Only)				
<b>Electric</b>	VOLTAGE AVAILABLE		208-480v 3ø 3,4w 50/60 Hz	
	APPROXIMATE NET WEIGHT		888 lb <b>402.79 kg</b>	
	APPROXIMATE SHIPPING WEIGHT		938 lb <b>425.47 kg</b>	
	AIRFLOW	60 Hz	1,200 cfm	<b>33.98 cmm</b>
		50 Hz	1,000 cfm	<b>28.31 cmm</b>
	EXHAUST CONNECTION (DIAMETER)		10"	<b>25.40 cm</b>
	COMPRESSED AIR CONNECTION		N / A	
	COMPRESSED AIR VOLUME		N / A	
	OVEN SIZE			
		kW	Btu/hr	<b>kcal/hr</b>
	24	81,900	<b>20,600</b>	
	36	122,800	<b>31,000</b>	
<b>Steam</b>	VOLTAGE AVAILABLE		N / A	
	APPROXIMATE NET WEIGHT			
	APPROXIMATE SHIPPING WEIGHT			
	AIRFLOW			
	STEAM CONSUMPTION			
	OPERATING STEAM PRESSURE			
	EXHAUST CONNECTION (DIAMETER)			
	COMPRESSED AIR CONNECTION			
	COMPRESSED AIR VOLUME			
	BOILER HORSEPOWER (NORMAL LOAD)			
	SUPPLY CONNECTION			
	RETURN CONNECTION			

Shaded areas are stated in metric equivalents

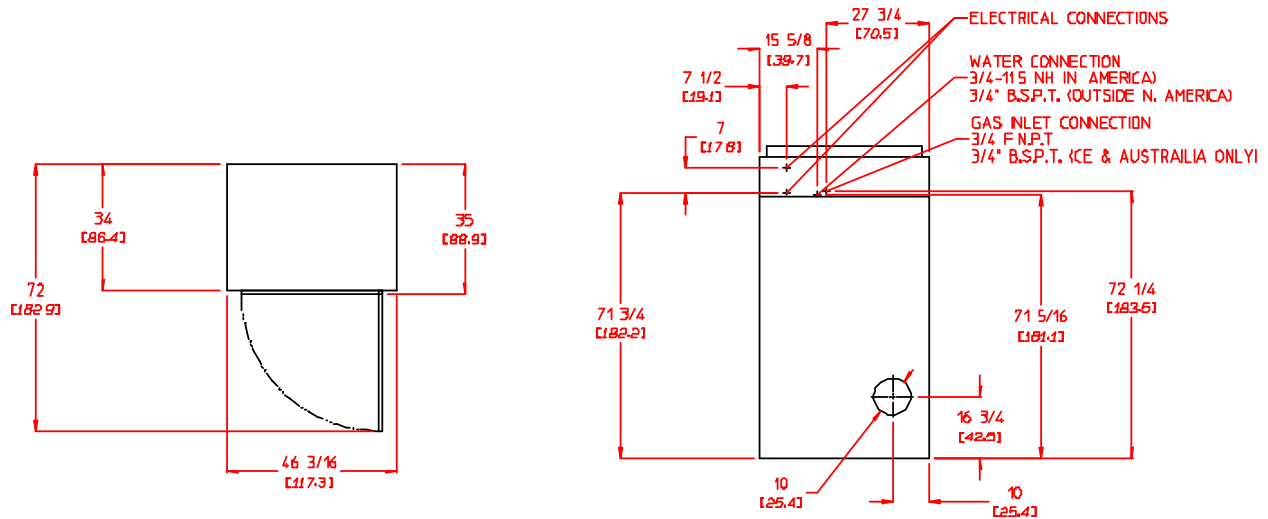
MS 5/23/06

\* For single-phase (1ø) dryers use 1 motor: 1 hp drive/fan. For 3-phase (3ø) non-reversing dryers use 1 motor: 1 hp drive/fan and for 3-phase (3ø) reversing dryers use 2 motors: 1 hp fan and 1/2 hp drive.

# AD-78

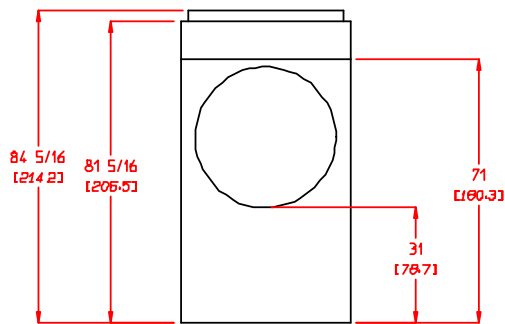
## DRYER NOTES:

- A MINIMUM OF 3/4 IN PIPE MUST BE SUPPLIED TO THE GAS INLET FOR EACH DRYER. SIZE OF PIPING TO DRYER VARIES WITH INSTALLATION CONDITIONS.
- TOP SECTION CAN BE REMOVED FOR EASY INSTALLATION. WITH TOP MODULE REMOVED THE HEIGHT OF THE CABINET IS REDUCED TO 71 IN. (180.3 CM).
- 3 IN (76.2 CM) HIGH COVER PANEL IS REMOVABLE FOR EASE OF INSTALLATION, REDUCING THE CABINET HEIGHT TO 81 5/16 IN (207 CM).
- DUCTWORK SIZE VARIES WITH INSTALLATION CONDITIONS.
- EXHAUST STATIC PRESSURE MUST BE NO LESS THAN 0 AND MUST NOT EXCEED 0.3" (0.74 MBI WATER COLUMN).



PLAN VIEW

REAR VIEW



FRONT VIEW

5-22-06



88 Currant Road • Fall River, MA 02720  
Tel. 508-678-9000 • Fax 508-678-9447  
sales@amdry.com • www.amdry.com